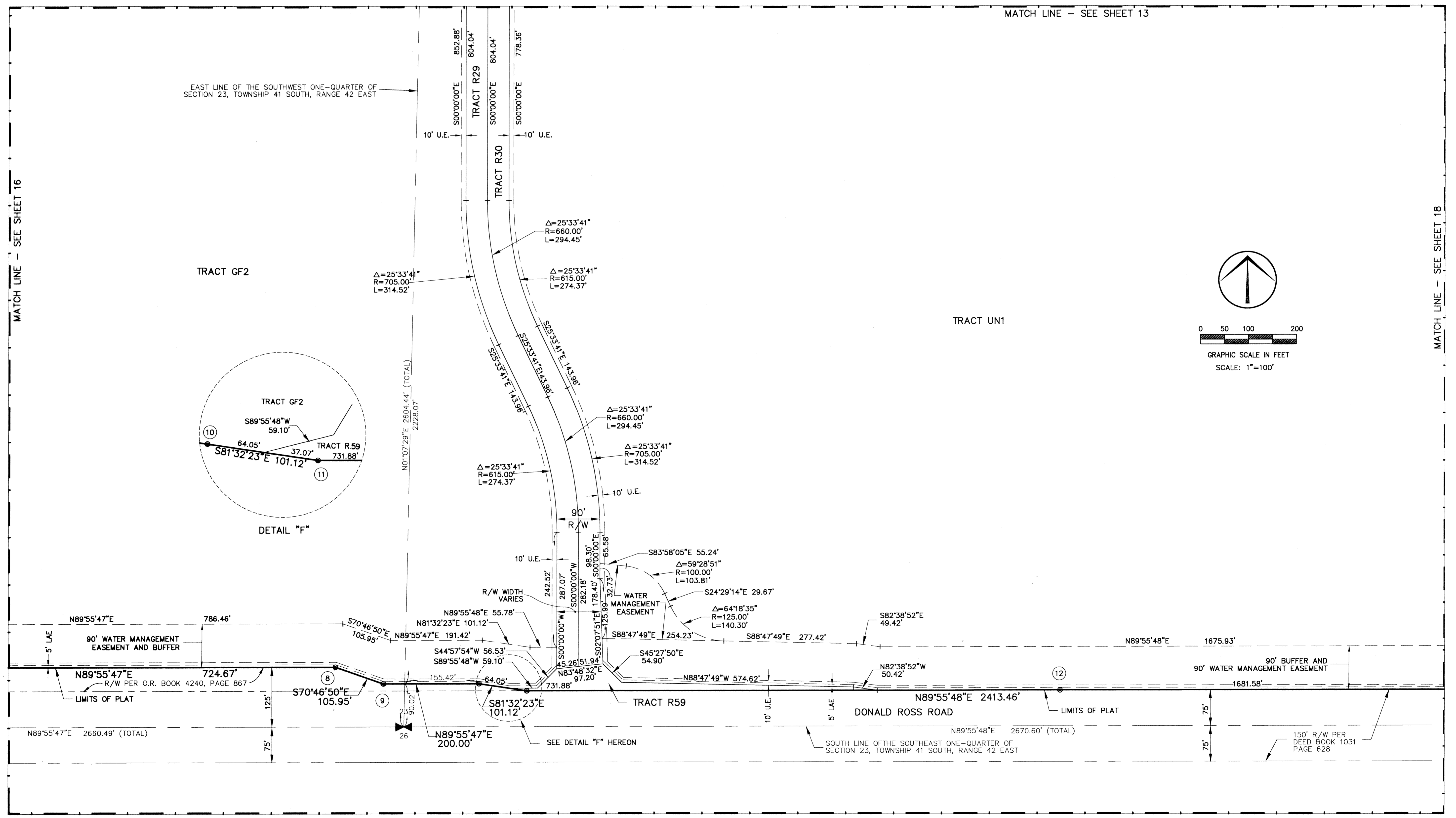
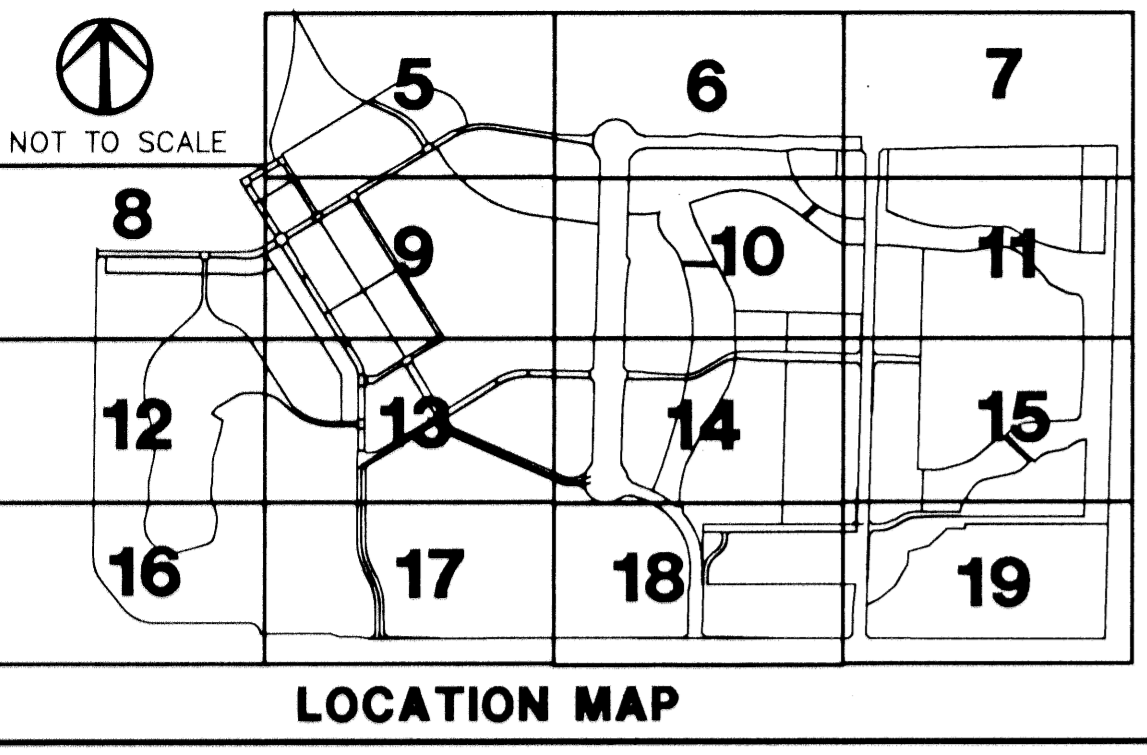


## ABACOA PLAT NO. 1

A PORTION OF SECTIONS 13, 14, 23 AND 24, TOWNSHIP 41 SOUTH, RANGE 42 EAST  
TOWN OF JUPITER, PALM BEACH COUNTY, FLORIDA

THIS INSTRUMENT PREPARED BY JAMES E. PARK, P.L.S.  
WILLIAMS, HATFIELD & STONER, INC. - ENGINEERS PLANNERS SURVEYORS  
1901 SOUTH CONGRESS AVENUE, SUITE 150, BOYNTON BEACH, FLORIDA 33426

SHEET 17 OF 19



MATCH LINE - SEE SHEET 13

MATCH LINE - SEE SHEET 16

MATCH LINE - SEE SHEET 18

